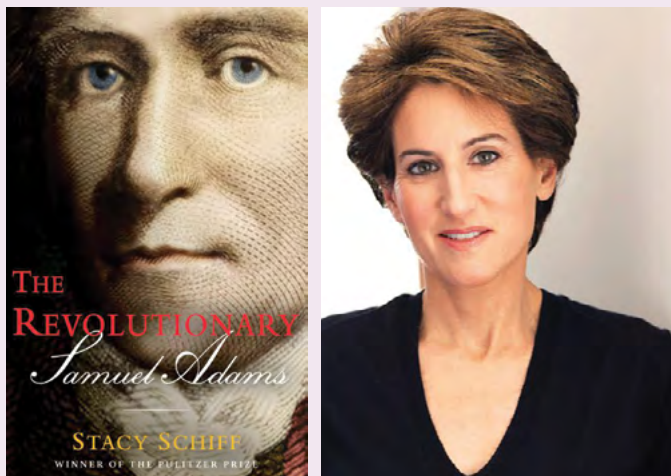


BOOKINGS

FOL University with Author Stacy Schiff

Sunday, November 5 at 2:30 p.m.
Lapham Meeting Room and on Zoom



FOL University, the Friends of the Library's scholarly lecture series, will feature Pulitzer Prize-winning biographer Stacy Schiff discussing her latest book, *The Revolutionary: Samuel Adams*, which recounts Adams' instrumental role in triggering the events that would lead to the American Revolution. Schiff will appear in conversation with John O'Connell, former President of the PWPL Board of Trustees.

Schiff's most recent books, *Cleopatra: A Life* and *The Witches: Salem, 1692*, were both #1 bestsellers. She also is the author of *Véra* (Mrs. Vladimir Nabokov), winner of the Pulitzer Prize; *Saint-Exupéry: A Biography*, a Pulitzer finalist; and *A Great Improvisation: Franklin, France, and the Birth of America*, winner of the George Washington Book Prize.

The Revolutionary: Samuel Adams will be available for purchase and signing. Visit pwpl.org/events to register.

QUICK READS

Visiting Hours

Monday & Tuesday 9 a.m. to 9 p.m.
Wednesday 11 a.m. to 9 p.m.
Thursday & Friday 9 a.m. to 9 p.m.
Saturday 9 a.m. to 5 p.m.
Sunday 1 p.m. to 5 p.m.

Special Holiday Hours

The Library will be open from 11 a.m. to 5 p.m. on November 22.

The Library will be closed November 23 for Thanksgiving.



The Library will once again be an early voting location from Oct. 28 to Nov. 5. For more details, visit the Nassau County Board of Elections website.

Non-Profit Organization
U.S. Postage
PAID
Permit No. 1828
Garden City, NY

POSTAL CUSTOMER
Port Washington, NY 11050

Port Washington Public Library
One Library Drive
Port Washington, NY 11050-2794

★ IN HONOR OF VETERAN'S DAY ★



Sandwiched In with Sal St. George – From Bilko to M*A*S*H Friday, November 3 at 12:00 p.m.

Join Adjunct Professor and TV and film historian Sal St. George for an entertaining program celebrating some of television's finest service comedies, including *The Phil Silvers Show*, *You'll Never Get Rich*, *McHale's Navy*, *Hogan's Heroes*, *Gomer Pyle*, *USMC*, *Private Benjamin*, and, of course, *M*A*S*H*.

Sandwiched In with Dennis Raverty – World War One:

Propaganda and Field Artists Friday, November 10 at 12:00 p.m. Lapham Meeting Room and on Zoom

Professor Raverty will explore the "War to End All Wars," the propaganda posters created during the First World War, and the field artists commissioned by the army to document the conflict. In honor of the Veteran's Day holiday, the local VFW Post 1819 will perform a special flag ceremony at the start of the program.

An Insider's View of the Legal Battle Against Book Banning

Sunday, November 19 at 2:30 p.m.
Lapham Meeting Room and on Zoom



The Friends of the Library presents a special program on the First Amendment featuring two attorneys on the front lines: "An Insider's View of the Legal Battle Against Book Banning" on Sunday, November 19

at 2:30 p.m. in the Lapham Meeting Room and on Zoom.

The program features FOL Board Member Rebecca Hughes Parker and Michael Bamberger, attorneys at global law firm Dentons. They are on the legal team seeking to overturn the Arkansas law that allows criminal charges against librarians and booksellers. They will discuss the status of that case and other state laws around the country resulting in book bans and legal threats to libraries.

Michael Bamberger, Senior Counsel at Dentons, is one of the nation's leading First Amendment lawyers, having appeared before the Supreme Court and nine federal courts of appeal. He also is general counsel to the Book Industry Study Group. Rebecca Hughes Parker, a Port resident, is an attorney in Dentons' Litigation and Dispute Resolution practice, with a focus on media, First Amendment, and data privacy/cybersecurity law. Before entering the legal profession, she was an award-winning news producer.

To register for the program, visit pwpl.org/events. For information on the FOL, email fol@pwpl.org.

— In the Adler Gallery —
Beni's Tiny Tales: Illustrations and Paintings
 by Jane Breskin Zalben

On view November 2 through December 28
Reception Sunday, November 19 from 1 p.m. to 3 p.m.



Jane Breskin Zalben has created over 50 award-winning books for children, including eight young adult novels, two cookbooks, and several poetry books. Her acclaimed picture books and novels explore family, friendship, self-reliance, inner strength, peace, and the creative process of music and art. This exhibit

will feature original artwork from Zalben's newly released book, *Beni's Tiny Tales: Around the Year in Jewish Holidays*, and large-scale abstract paintings used as inspiration in the book.

Zalben will be one of several presenters on an upcoming Friends of the Library sponsored panel discussion, *Painting Pictures and Telling Tales: Writing and Illustrating Children's Books*, on Sunday, December 3 at 2 p.m. Joining her will be author, curator and leading critic of children's books, Leonard Marcus, Editorial Director of Charlesbridge (Penguin/Random) Eileen Robinson and moderated by best-selling and award-winning children's book author, Marvin Terban. *Images courtesy of Kidlit.tv*



Find us on Social Media



Bookings No. 406 / November 2023

Published by the Port Washington Public Library
 One Library Drive
 Port Washington, NY 11050-2794

PWPL.org

516-883-4400 • Library@PWPL.org

Follow us on Facebook & Instagram

Visit our YouTube channel

Library Trustees:

- William Keller, *President*
- Patricia Bridges
- Nancy Comer
- Michael Krevor
- Adrienne Saur
- Matthew Straus
- Sima Vasa

Library Director:

Keith Klang

Bookings Editor:

Luisa Muñoz

Bookings Contributors:

- Elizabeth Agramonte, Jean Bennett, Amy Christake, Melanie Davidoff, Lori Gerbasi, Jonathan Guildroy, James Hutter, Michelle Karnsomtob, Kate Monsour, Vanessa Nastro, Zachary Sogluizzo, Tony Traguardo, Janet West, Jeff Zeh

Library Hours

Please see front cover for Library hours. Or visit us online at PWPL.org/Information/Hours

Residents of the Port Washington Union Free School District are entitled to a PWPL card, which may also be used at any Library in Nassau County. To apply for a card, stop by the Library with proof of residence or apply online at PWPL.org/Get-A-Library-Card.

Non-residents who work in Port Washington may also apply.

Vision:

To enhance the well-being of every community member.

CALLING ALL ARTISTS!

Are you a local artist, or do you know someone who is? The Art Advisory Council is currently accepting artist submissions for exhibition of their work in the Library's Adler Gallery. If you are interested in having a show of your artwork, please complete the exhibit request form at bit.ly/ExhibitApplication. The AAC will review all submissions, and artists will be contacted once a decision has been made on their application.

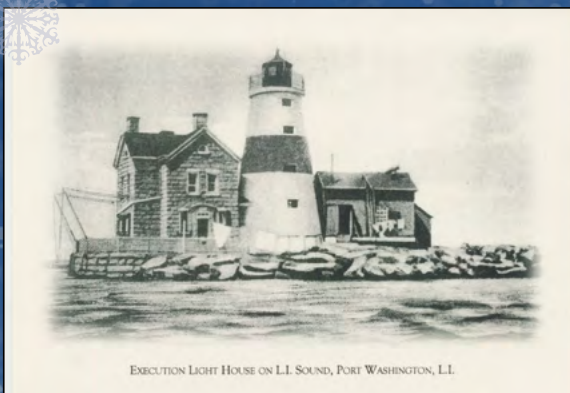


PORT WASHINGTON NOTECARDS

Perfect for holiday cards and gifts!

Featuring four iconic images from Port Washington's past, these notecards are the perfect gift for anyone who loves our town. Each gift box contains 20 notecards: 5 each of 4 different scenes. Your purchase supports the Friends of the Library.

Ask for them at the Circulation Desk in the lobby. \$15 per box.



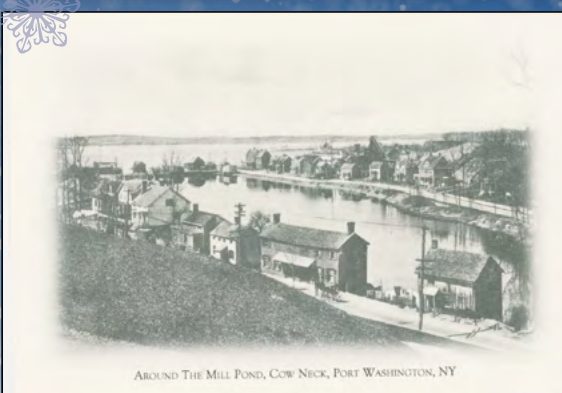
EXECUTION LIGHT HOUSE ON LI SOUND, PORT WASHINGTON, LI.



MAIN STREET, NEAR WASHINGTON AVENUE, PORT WASHINGTON, N.Y.



THE OLD MILL, COW NECK, PORT WASHINGTON, N.Y.



AROUND THE MILL POND, COW NECK, PORT WASHINGTON, N.Y.



Mission Statement:

The Port Washington Public Library is an inclusive center for community engagement, knowledge, and personal enrichment.

SoundSwap Concert: Shindig!

Saturday, November 4 at 3:00 p.m.
Lapham Meeting Room



Join the Library's own Tony Traguado as his classic rock band, Shindig! returns to the Library. Shindig! performs songs from each musical phase of the tumultuous '60s, along with tunes that topped the charts in the 70s. Founding band members John Keating, Steve Leunig, and Chris DaGrossa formed the core of Shindig! with Traguado in 1994. Shortly after guitarist Barry Fisch and vocalist Janet Grunwald (a Port native) came on board, Shindig! began performing in venues all over Long Island. Four of the band's original members are participating in this band reunion, and long-time member, drummer Karl Schmitt, will join them. *Sponsored by Friends of the Library.*

SoundSwap Concert: Mind Open

Friday, November 3 at 7:00 p.m.
Lapham Meeting Room

Mind Open is a Long Island-based psychedelic jazz jam band based in NYC with vibraphone as its main melodic instrument. The band uniquely blends several genres, featuring catchy songwriting reminiscent of Burt Bacharach, liquid vibes a la Milt Jackson, funky psychedelic jams that recall Medeski Martin and Wood, and even some of the surf rock twang of the Ventures. Their original compositions have been described as "musical ambrosia" or "very pleasing" by the great pianist Craig Huxley. The band's most recent album, *Road Trip*, was released this June and is available on all streaming platforms. *Sponsored by Friends of the Library.*

English for Speakers of Other Languages (ESOL) News

ESOL Offerings:

Aside from English classes, the ESOL program also offers an intermediate level Spanish language class, GED and citizenship preparation classes, orientation and community information sessions. For more information about our ESOL Program, please contact Peggy O'Hanlon at ohanlonp@pwpl.org or (516) 883-4400 x1308. This service is free to all members who live or work in the Port Washington community. *All materials for specialized classes are covered through a grant from the Friends of the Library.*

El Reto de Ser Inmigrante y Cómo Enfrentarlo (en español) Monday, November 6 • 6:30 p.m. Hagedorn Meeting Room

El duelo migratorio es el proceso de asimilación de los cambios asociados a la experiencia de vivir en otro país. Algunas personas que emigran extrañan la lengua, la comida, la cultura, la familia y los amigos, el estatus y la tierra. Para algunos, el proceso de adaptación puede ser un poco más difícil. En este taller, hablaremos y compartiremos esos sentimientos para poder superar esas añoranzas o sentimientos de pérdida y/o ausencia. Este nuevo inicio implica adaptarse y aprovechar las nuevas oportunidades!

Curso de RCP, Atragantamiento y AED (en español) Thursday, November 16 • 6:00 p.m. Lapham Meeting Room

Reanimación o Resucitación Cardiopulmonar - CPR (por sus siglas en inglés). En este curso aprenderemos técnicas y pasos para prestar los primeros auxilios a una persona en situación de emergencia. Este evento es patrocinado por "The Friends of the Library."



New in The Lab: Resin 3D Printer



We've upgraded our 3D Printing equipment to include the Form 3+ resin printer. Resin printing provides a higher quality, more solid print than our Dremel filament printers. For the resin printer, we offer a selection of 6 different resins: standard resin in white, gray, black, or clear, durable resin, and elastic 50A resin. The standard resins cost \$1.50 per 10 ml used, and durable and elastic costs \$2.00 per 10 ml used. For more information about the resin printer or to submit a print job, please reach out to 3dprinter@pwpl.org. *Supported by the Friends of the Library.*

Homebrew Music Coffeehouse

Friday, November 10 at 7:00 p.m.
Lapham Meeting Room

The Library is delighted to continue the Homebrew Music Coffeehouse series. The series aims to bring people together over a shared love of music and to introduce our Library community to fine, local musical talent. These unique informal gatherings of musicians and music lovers come together monthly to enjoy a live performance by one or more group members. One performer will serve as the evening's compere and headliner, but the event will include several highly talented local players! *Sponsored by Friends of the Library.*

— Career and Personal Finance Programs — How to Effectively Work with Recruiters

2-Part Series – Saturday, November 11

Part I: 10:00 a.m. to 12:00 p.m.

Part II: 1:00 p.m. to 3:00 p.m.

in Hagedorn Meeting Room

Many job seekers have misconceptions about the primary role of a recruiter. To effectively work with a recruiter, one must first understand the various types of recruiting, their role, and how they work. In this 2-part workshop, you will learn how to find the right recruiter, what information you should share, and how to navigate the process effectively and cautiously. *This program is being offered by the Port Washington Public Library's Career and Personal Finance Center.*



November 2023

Check our website for the latest listings
at PWPL.org/events

PWPL ON YOUTUBE

[YouTube.com/portwashingtonpubliclibrary](https://www.youtube.com/portwashingtonpubliclibrary)

“HYBRID” PROGRAMS

Hybrid programs can be enjoyed at the Library in-person or virtually via Zoom. Users without a device can call into our sessions. Need help? Email Library@PWPL.org or call 883-4400 x1900.

PLEASE NOTE:



Registration is required for all events, unless stated otherwise. Register for all events at pwpl.org/events

REGISTRATIONS IN NOVEMBER

Type the program name in “Keyword Search” to be directed to the registration link.

November 14: Cricut Craft: Wood Décor Sign
Registration begins 11/1.

November 18: Defensive Driving Course
Registration begins 11/1 at 11:00 a.m.

December 1: Cricut Craft: Gift-a-Mug
Registration begins 11/20.

December 12: Cricut Craft: Holiday Cards
Registration begins 11/28.

Key to Events:

- Adult Program
- Children’s Room
- Teenspace
- Family Program
- Career & Finance Program

Wednesday, November 1

- **1-2-3 Play with Me at 11:30 a.m.**
See page 8 for details.
- **Children’s Book Writing Workshop at 6:00 p.m. in Mezzanine Meeting Room**
Three-week workshop for writers who are interested in publishing their written work.
- **Study & Take Notes Effectively at 7:00 p.m.**
See page 7 for details.
- **Film: *Gigi & Nate* (2022-114 min.) at 7:00 p.m. in Lapham Meeting Room**

After a daring dive into the local swimming hole, teenager Nate (Charlie Rowe) suffers a near-fatal illness and is left quadriplegic. His future looks dim until his mother, Claire (Marcia Gay Hardin), brings home Gigi, a capuchin monkey trained as a service animal. Scripted by David Hudgins, produced & directed by Nick Hamm and co-produced by Nick’s brother, Jon Hamm. *No registration required.*



Thursday, November 2

- **Baby Rhyme Time at 9:30 a.m. and 10:30 a.m.** See page 8 for details.
- **Art Lecture with Thomas Germano - Frans Hals: 2023-24 Exhibitions at 3:00 p.m. in Lapham Meeting Room**
Professor Thomas Germano will present a visual lecture about the life of Fran Hals, his work, and the 2023-24 Hals exhibitions in London and Amsterdam.
- **Film: *In Our Time* (1944-110 min.) at 7:00 p.m. in Lapham Meeting Room**
Jennifer Whittredge (Ida Lupino) travels to Poland, where she falls in love with Count Stefan Orwid (Paul Henreid) as World War II begins. Ellis St. Joseph & Howard Koch scripted for director Vincent Sherman. *No registration required.*

Friday, November 3

- **Ready, Set, Story Time at 9:30 a.m.**
See page 8 for details.
- **Sandwiched In with Sal St. George: From Bilko to M*A*S*H at 12:00 p.m.**
See cover for details.
- **SoundSwap Concert: Mind Open Performs Live at 7:00 p.m. in Lapham Meeting Room**
See page 3 for details.

Saturday, November 4

- **SoundSwap Concert: Shindig! at 3:00 p.m.**
See page 3 for details.

Sunday, November 5

- **FOL University with Author Stacy Schiff at 2:30 p.m. in Lapham Meeting Room and on Zoom**
See cover for details.

Monday, November 6

- **A Time For Kids-Baby Start at 10:00 a.m.**
See page 8 for details.
- **A Time For Kids at 10:45 a.m.**
See page 8 for details.
- **Preschool Story Time at 1:30 p.m.**
See page 8 for details.
- **Teen Gaming at 3:30 p.m.** See page 7.
- **El Reto de Ser Inmigrante y Cómo Enfrentarlo (en español) at 6:30 p.m. in Hagedorn Meeting Room**
See page 3 for details.

Tuesday, November 7

- **Sing and Swing at 9:30 a.m. and 10:15 a.m.**
See page 8 for details.
- **Support Group for Caregivers of Elderly Relatives at 7:00 p.m. in Children’s Workshop Room**
This support group gives participants the opportunity to talk with others experiencing similar circumstances and share ideas for the best ways to handle various situations.

Wednesday, November 8

- **1-2-3 Play with Me at 11:30 a.m.**
See page 8 for details.
- **The College Process For Teens at 7:00 p.m.** See page 7 for details.

Thursday, November 9

- **Baby Rhyme Time at 9:30 a.m. and 10:30 a.m.** See page 8 for details.
- **Nonfiction Book Club at 1:30 p.m.**
See page 6 for details.
- **Escape Room at 2:00 p.m. and 3:30 p.m.**
See page 8 for details.
- **STEAM Afternoon at 3:30 p.m.**
See page 8 for details.

Friday, November 10

- **Ready, Set, Story Time at 9:30 a.m.**
See page 8 for details.
- **Sandwiched In with Dennis Raverty - World War One: Propaganda and Field Artists at 12:00 p.m.** See cover for details.
- **Alzheimer’s Information Session at 2:00 p.m. in Hagedorn Meeting Room**
Representatives from Parker Institute’s *Willing Hearts, Helpful Hands* program will be available to provide information on their services to Alzheimer’s patients and their caregivers. *No registration required.*
- **Gold Coast International Film Festival Series - FAMILY SHORTS at 3:00 p.m. in Lapham Meeting Room**
See page 8 for details.
- **Homebrew Music Coffeehouse at 7:00 p.m.** See page 3 for details.

Saturday, November 11

- **How to Work With Recruiters Effectively Part I at 10:00 a.m.** See page 3 for details.
- **How to Work With Recruiters Effectively Part II at 1:00 p.m.** See page 3 for details.

Monday, November 13

- **Preschool Story Time at 1:30 p.m.**
See page 8 for details.
- **Afternoon on Broadway: A Celebration of Cole Porter at 3:00 p.m. in Lapham Meeting Room**
Join award-winning stage and film director Stephen Nachamie as he explores the life and music of the legendary Cole Porter. Mr. Nachamie will explore musicals such as *Anything Goes*, *Can-Can*, *Silk Stockings*, and more.
- **Teen Gaming at 3:30 p.m.** See page 7.
- **Film: *The V.I.P.s* (1963-119 min.) at 7:00 p.m. in Lapham Meeting Room**
Elite passengers waiting for London-to-U.S. flights get fogged in, and have to deal with their problems rather than run from them. The all-star cast includes Elizabeth Taylor, Richard Burton, Rod Taylor and Orson Welles. *No registration required.*

Tuesday, November 14

■ **Sing and Swing at 9:30 a.m. and 10:15 a.m.**
See page 8 for details.

■ **Hypertension Screenings from 11:00 a.m. to 2:00 p.m. in Joan and Arnold Saltzman Reading Room**
St. Francis Blood Pressure screening.

■ **Art Lecture with Alice Schwarz: The Origins of Fauvism at 12:00 p.m. in Lapham Meeting Room**

Henri Matisse and Andre Derain embarked on a partnership that led to a new, radical artistic language later known as Fauvism. Using the Met's exhibition *Vertigo of Color* as a springboard, museum educator Alice W. Schwarz will explore their daring, energetic experiments with color and perspective. *Sponsored by the Friends of the Library.*

■ **Cricut Craft: Wooden Decor Sign at 6:30 p.m. in Mezzanine Meeting Room**

Join us in designing a wooden decor sign using the Cricut Maker 3. Open to everyone 8 and up. More details at pwpl.org/events

■ **Leaf Lantern Workshop at 6:30 p.m.**
See page 8 for details.

■ **Narcan Training at 7:00 p.m. in Lapham Meeting Room**

Acquire the skills necessary to recognize and respond to an opioid overdose. Attendees will receive free Narcan kits following this event. Be prepared to save a life in an emergency situation. Presented by the staff of the Central Nassau Guidance and Counseling Services.

Wednesday, November 15

■ **1-2-3 Play with Me at 11:30 a.m.**
See page 8 for details.

■ **Teen Anime Club at 4:00 p.m.**
See page 7 for details.

■ **Discussion Group (Ages 60+): Your Most Recent Memorable Experience at 7:00 p.m. in Lapham Meeting Room**

Join us for an informal discussion that aims to build community with intelligent discussion, laughter, and social interaction.

■ **Board of Trustees Meeting at 7:30 p.m. in Hagedorn Meeting Room**

Board of Trustees Meeting. All are welcome.

Thursday, November 16

■ **Baby Rhyme Time at 9:30 a.m. and 10:30 a.m.** See page 8 for details.

■ **RCP - Reanimación o Resucitación Cardiopulmonar - CPR (En español) at 6:00 p.m.** See page 3 for details.

Friday, November 17

■ **Ready, Set, Story Time at 9:30 a.m.**
See page 8 for details.

■ **Sandwiched In - Great Travel Adventures: Hotel Richemond in Switzerland at 12:00 p.m. in Lapham Meeting Room**

Dr. Ron Brown will share stories of when he worked as the night porter in one of Geneva's most exclusive hotels and the colorful characters he encountered.

■ **For the Record: The Beatles 1962-1966 and 1967-1970 at 2:30 p.m.**
See page 6 for details.

Saturday, November 18

■ **Defensive Driving Course at 9:30 a.m. in Hagedorn Meeting Room**

The course runs from 9:30 a.m. to 3:30 p.m. Seating is limited and registration is required. Payment of \$33 will be collected by the instructor during class.

■ **Hootenanny!: The Library's Terrace Band at 3:00 p.m. in Lapham Meeting Room**

Join Tony Traguado and the Library's Terrace Band members for the return of this popular library music event, where talented local musicians present a unique evening of live classic rock and pop music focusing on the 1960s and 1970s. Members of the public who wish to play a song during the evening's opening acoustic segment or electric band segment should contact Tony Traguado at x1406 to learn how to join the show! *No registration required.*

Sunday, November 19

■ **Artist Reception at 1:00 p.m.**
See page 2 for details.

■ **The FOL Presents - An Insider's View of the Legal Battle Against Book Banning at 2:30 p.m.** See cover for details.

Monday, November 20

■ **Preschool Story Time at 1:30 p.m.**
See page 8 for details.

■ **Teen Gaming at 3:30 p.m.**
See page 7 for details.

Tuesday, November 21

■ **Sing and Swing at 9:30 a.m. and 10:15 a.m.**
See page 8 for details.

■ **Teen Virtual Reality Night at 7:00 p.m.**
See page 7 for details.

Friday, November 24

■ **Live TV Game Show at 11:00 a.m.**
See page 8 for details.

■ **Family Film: *The Little Mermaid* (2023) at 2:30 p.m.** See page 8 for details.

■ **Film: *The Phantom of the Open* (2021-106 min.) at 7:00 p.m. in Lapham Meeting Room**

Mark Rylance stars as Maurice Flitcroft, a good-natured fellow who determines to compete in the British Open Golf Championship, despite having just taken up the game — and despite showing no talent for it! Craig Roberts directed this humorous and touching docudrama, from Simon Farnaby's screenplay. *No registration required.*



Sunday, November 26

■ **Raks Sharki Belly Dance Show from 2:00 p.m. to 4:00 p.m. in Lapham Meeting Room**

Be ready to be amazed as belly dancers take center stage! After, there will be a half-hour lesson on belly dancing. *No registration required.*

Monday, November 27

■ **Teen Gaming at 3:30 p.m.** See page 7 for details.

Tuesday, November 28

■ **Sing and Swing at 9:30 a.m. and 10:15 a.m.**
See page 8 for details.

■ **Fiction Book Club at 7:30 p.m.**
See page 6 for details.

Wednesday, November 29

■ **Family Game Night at 6:30 p.m.**
See page 6 for details.

Thursday, November 30

■ **Adventures in Classic Readings at 1:30 p.m.** See page 6 for details.

Community Meetups in the Mezzanine Meeting Room

Chess – Join a game every Tuesday from 3 to 6 p.m.

Mahjong – Join us for a game of Mahjong every Thursday from 12 to 3 p.m.

Scrabble – Join us for a game every Friday from 2 to 5 p.m.

Fiesta in the Park 2023



Peggy O'Hanlon and Haydee Buitron at the PWPL table handing out the passport activity.



Child with her passport activity "visiting" Colombia.

November Book Clubs

Join fellow readers at the Library for an engaging discussion at our book clubs. Copies of the books can be found at the Information Desk and on Libby.

Nonfiction Book Club:

Knowing What We Know: The Transmission of Knowledge, from Ancient Wisdom to Modern Magic
by Simon Winchester

Thursday, November 9 at 1:30 p.m.



Examining such disciplines as education, journalism, encyclopedia creation, museum curation, photography and broadcasting, an award-winning writer explores how humans have attained, stored, and disseminated knowledge.

Fiction Book Club:

The Midnight Library by Matt Haig
Tuesday, November 28 at 7:30 p.m.



Nora Seed finds herself faced with the possibility of changing her life for a new one, following a different career, undoing old breakups, or realizing her dreams of becoming a glaciologist; she must search within herself as she travels through the *Midnight Library* to decide what is truly fulfilling in life, and what makes it worth living in the first place.

Adventures in Classic Readings:

Crime and Punishment by Fyodor Dostoyevsky
Thursday, November 30 at 1:30 p.m.



A man must endure relentless physical and mental punishments as retribution for his act of murder.

This reading group, facilitated by Dr. Laury Magnus, Professor of English, will feature great classic works — ancient to contemporary — and participatory reading aloud of selected passages.

Sponsored by the Friends of the Library's Ruth D. Bogen Memorial Fund.

Family Game Night

Wednesday, November 29 from 6:30 to 8:30 p.m.



Explore new games and old ones at the Library! Play games on the Switch, PlayStation 4 VR, PlayStation 5, and Meta Quest 2. Feel nostalgic by playing games on Super Nintendo or your favorite classic board games. It is great for those who wish to connect more with family and others on their love for games. All ages are welcome. Registration starts November 14.

Disclaimer: Virtual Reality headsets are for those 13 and older.

For the Record: The Beatles' albums 1962-1966 and 1967-1970

Friday, November 17 at 2:30 p.m.
in Lapham Room

Join Tony Traguado for a close look at the Beatles' compilation albums 1962-1966 and 1967-1970. Fans and the Beatles themselves are celebrating the 50th anniversary of the compilations that have come to be known as the *Red* and *Blue* albums. Word is that newly released editions may be on their way from Apple Records. Could these releases be connected to the completion of a new, and last, Beatles song called "Now and Then"?

Museum Highlight:



Reserve a pass to the Long Island Explorium, an interactive children's museum for science and engineering. The museum is recognized as Long Island's Family Maker Space, a place for families to play, create, build, and grow together. The pass provides free admission for up to six people. The Explorium is located in Port Jefferson and is currently open on Saturdays and Sundays from 1 to 5 p.m. Available as Print-On-Demand! Reserve online at www.PWPL.org/museumpass. Sponsored by the Friends of the Library.

The LIBRARY OF GAMES and GADGETS



Check out our **virtual reality headset**, **Google Cardboard**, or **telescope** for an out-of-this-world experience. A maximum of three items may be reserved online at PWPL.org/LOGG up to 30 days in advance. Express copies are also available at the circulation desk on a first-come, first-served basis.

Sponsored by the Friends of the Library.

DISCOUNT TICKETS

FOR PORT WASHINGTON RESIDENTS

long Island
aquarium



AMERICAN MUSEUM
OF NATURAL HISTORY

WCS

LI
SC

LONG ISLAND SCIENCE CENTER

Available for Purchase at the PWPL Circulation Desk

For more information call 516-883-4400 x1200 or visit www.PWPL.org/discount-tickets

TeenSpace

Grades 7-12



Teen Gaming

Every Monday from 3:30 to 6 p.m.

Teens in grades 7-12 are invited to come play Nintendo Switch games with other teens after school. *No registration required.*

Study & Take Notes Effectively

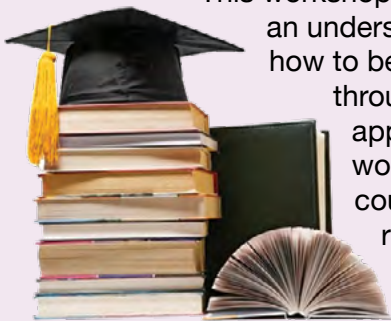
Wednesday, November 1 from 7:00 p.m. to 8:30 p.m.

For teens in grades 7-12 and their parents/guardians

In this workshop, Dominique Padurano, Ph.D., teaches teens key strategies for critical reading, note-taking, and studying for exams. She also shows parents how to effectively monitor and assist their teens at home as they experiment with these new techniques. Teens should bring a notebook and a pen/pencil. *Registration begins October 18.*

The College Process For Teens

Wednesday, November 8 from 7:00 p.m. to 9:00 p.m.



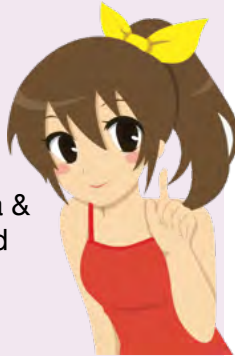
This workshop will provide students and parents with an understanding of the college process and how to best support students as they navigate through high school and prepare for the application season in senior year. This workshop includes the importance of the course selection process, demonstrating rigor, academic performance, character building, the essay, etc. The program is ideal for families who want to get a head start on understanding the

college process and/or for parents who might need additional tips to support their senior students. *Registration begins October 24.*

Teen Anime Club

Wednesday, November 15 from 4:00 p.m. to 5:00 p.m.

Join us for our monthly anime club meeting! Come on down after school to discuss your favorite manga & anime. We will vote on what anime we will watch and consider suggestions sent to youngadult@pwpl.org. *Registration begins November 1.*



Teen Virtual Reality Night

Tuesday, November 21 from 7:00 to 8:30 p.m.

Welcome to the Teen Virtual Reality night! Enjoy using VR to play games like *Superhot*, *Five Night at Freddy's*, and more. You will be using the PlayStation VR and the Meta Quest 2. Games have suitable ratings: E for everyone and T for teen. Participating VR players must have a parent/guardian sign a waiver before gameplay. *Registration begins November 7.*

TEST PREP HELP

Planning to take the SAT or ACT exam soon? If so, we have you covered with several online test preparation services. Visit www.PWPL.org and login with your PWPL Library card to create an account and track your progress.



Job Now Skillsurfer – Study guides and practice exams, for PSAT, SAT, AP exams and more. The service also includes eParachute to help you find college majors and careers that match your skills and interests.

LearningExpress – Tutorials, exams, and eBooks for PSAT, SAT, ACT, AP exams, and more. In addition, it provides eBooks on writing college admission essays.

Mometrix Test Prep – Flash cards, practice questions, eBooks and tests for Regents, AP, SAT, ACT, PSAT exams, and much more.

Tutor.com – Includes lessons, practice drills, sample tests, and detailed score reports for SAT, ACT, and AP exams. You can also submit your college essay for review by a professional tutor.

Supported by the Friends of the Library.

Submit a Review for Community Service

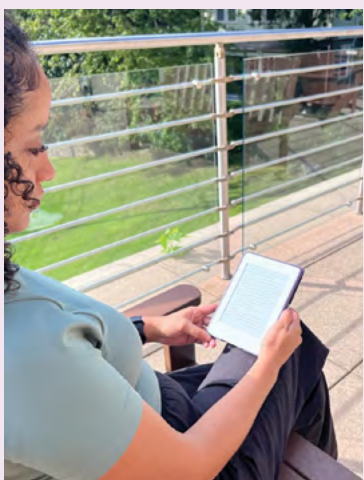


Teens in grades 7-12 can earn 2 hours of community service by reading, playing games, listening to podcasts, watching shows and movies, and then submitting a review. Teens may submit up to 3 reviews per month and receive 2 hours of community service credit per review. Reviews should be between 50-100 words. Teens will be notified when their certificates are available for pickup.

Scan QR code for the review form



Borrow a Teen Kindle



The Library has three Young Adult Kindle Paperwhites available to borrow with over 100 pre-loaded popular books. Reserve the Kindles through the Library of Games and Gadgets website. *Sponsored by the Friends of the Library.*

Scan for the list of titles on our YA Kindle.



Patrons can now borrow Japanese-style comic books and graphic novels, known as manga, on hoopla under the comics section. With thousands of new titles coming in the next few months, patrons can now read over 300 manga titles on hoopla in the traditional right-to-left orientation.

Hoopla is free with your library card. Download the hoopla app today and start exploring!

Early Childhood

Find registration start dates and register online at PWPL.org/children

1-2-3 Play with Me

Wednesdays, November 1, 8, & 15 from 11:30 a.m. to 12:30 p.m.

Ages 18 months to 5 years with an adult

Spend time with your child and meet new people in an educational and creative environment. Each week a different resource professional will be on hand to discuss sign language, the importance of play, language development, movement, and dental hygiene. *Registration required.*

Baby Rhyme Time

Thursdays, November 2, 9, & 16

from 9:30 to 10:00 a.m. or 10:30 to 11:00 a.m.

For children ages birth to 17 months with and adult

A lap-sit story time filled with songs, music and bouncing rhymes that emphasizes early literacy skills and introduces babies to the magic of books. *Admittance is on a first-come, first-served basis.*

Ready, Set, Storytime

Fridays, November 3, 10, & 17 from 9:30 to 10:00 a.m.

Ages birth to 5 years with an adult

Join your favorite librarians for stories, songs, and fingerplays. *No registration required.*

A Time For Kids-Baby Start

Monday, November 6 from 10:00 to 10:30 a.m.

Ages 3 months to 17 months with an adult

Join Ms. Karen as we introduce our littlest learners to the wonderful world of library programs. Activities include music, movement, fine and gross motor development, and stories. Focus is on early literacy, early language development, and socialization. *Registration required.*

A Time For Kids

Monday, November 6 from 10:45 to 11:45 a.m.

Ages 18 months to 5 years with an adult

Ms. Karen presents educational activities, movement, music, and a craft. *Registration required.*

Preschool Story Time

Mondays, November 6, 13 & 20 from 1:30 to 2:00 p.m.

Ages 2 ½ to 5 years with an adult

Enjoy stories, songs, and fingerplays while your child develops essential early literacy skills. *Registration closed.*

Sing and Swing

Tuesdays, November 7, 14, 21, & 28

from 9:30 to 10:00 a.m. or 10:15 to 10:45 a.m.

Ages 18 months to 5 years with an adult

Interactive stories, rhymes and songs emphasize early literacy skills and help instill a lifelong love of learning. *Admittance is on a first-come, first-served basis.*

First through Sixth Grade

Find registration start dates and register online at PWPL.org/children

Harry Potter Escape Room

Thursday, November 9 from 2:00 to 3:00 p.m. or 3:30 to 4:30 p.m.

Use your problem-solving skills and determination to unlock the secrets of our Harry Potter-themed escape room. For children in 4th to 6th grade. *Registration required.*

STEAM Afternoon

Thursday, November 9 from 3:30 to 5:00 p.m.

Stop by and fall into STEAM with hands-on activities and crafts, as well as a raffle prize to continue your STEAM journey! For children in 1st to 6th grade with an adult. *No registration required.*

Leaf Lantern Workshop

Tuesday, November 14

from 6:30 to 7:15 p.m.

Use fall leaves to create a fun autumn craft. For children in 3rd to 5th grade. *Registration required.*



FAMILY HOLIDAY PROGRAM

Live TV Game Show

Friday, November 24 at 11 a.m.

A simulated TV game show complete with host, electronic scoring, countdown clock and a physical challenge round! A combination of *Jeopardy* and *Minute to Win It*, the Live TV Game Show is fast-paced, educational, and fun for all. For children in 1st to 6th grade with an adult. *Sponsored by the PWPL Children's Advisory Council. Tickets are required and will be available in the Children's Room beginning November 13.*

Family Film: *The Little Mermaid*

Friday, November 24 at 2:30 p.m. to 4:45 p.m.

The youngest of King Triton's daughters, Ariel is a beautiful and spirited young mermaid with a thirst for adventure. Longing to find out more about the world beyond the sea, Ariel visits the surface and falls for the dashing Prince Eric.



Following her heart, she makes a deal with the evil sea witch, Ursula, to experience life on land. Rated: PG, 2023-135 minutes. *No registration required.*

Gold Coast International Film Festival Series

FAMILY SHORTS

**Friday, November 10 at 3:00 p.m.
in Lapham Meeting Room**



As part of a series of film festival events, the Gold Coast International Film Festival is proud to present FAMILY SHORTS, a fantastic and fun program of short films perfect for the whole family! This 45-minute program is suitable for all ages and includes take-home movie-themed art activities. Each registrant can register for up to 4 seats for the Family Shorts screening.

CREATIVE READERS

Saturdays, November 4, 11, 18

Kindergarten - Second Grade from 10:00 to 11:00 a.m.

Third - Fifth Grade from 11:15 a.m. to 12:15 p.m.

Creative Readers is an arts and literacy inclusion program where children in kindergarten through 5th grade will use theater, art, movement, and music to bring books to life. Facilitated by Program Director Elise May. Professional behavior support will be at all sessions. For program and registration information, and high school volunteer opportunities please email creativereaders@optimum.net or visit the Creative Readers page on the PWPL website. *Registration is closed.*